

*Smutskie Jarmarkowe*

Skala: 1:1000

*Województwo*

*→ Barycz*



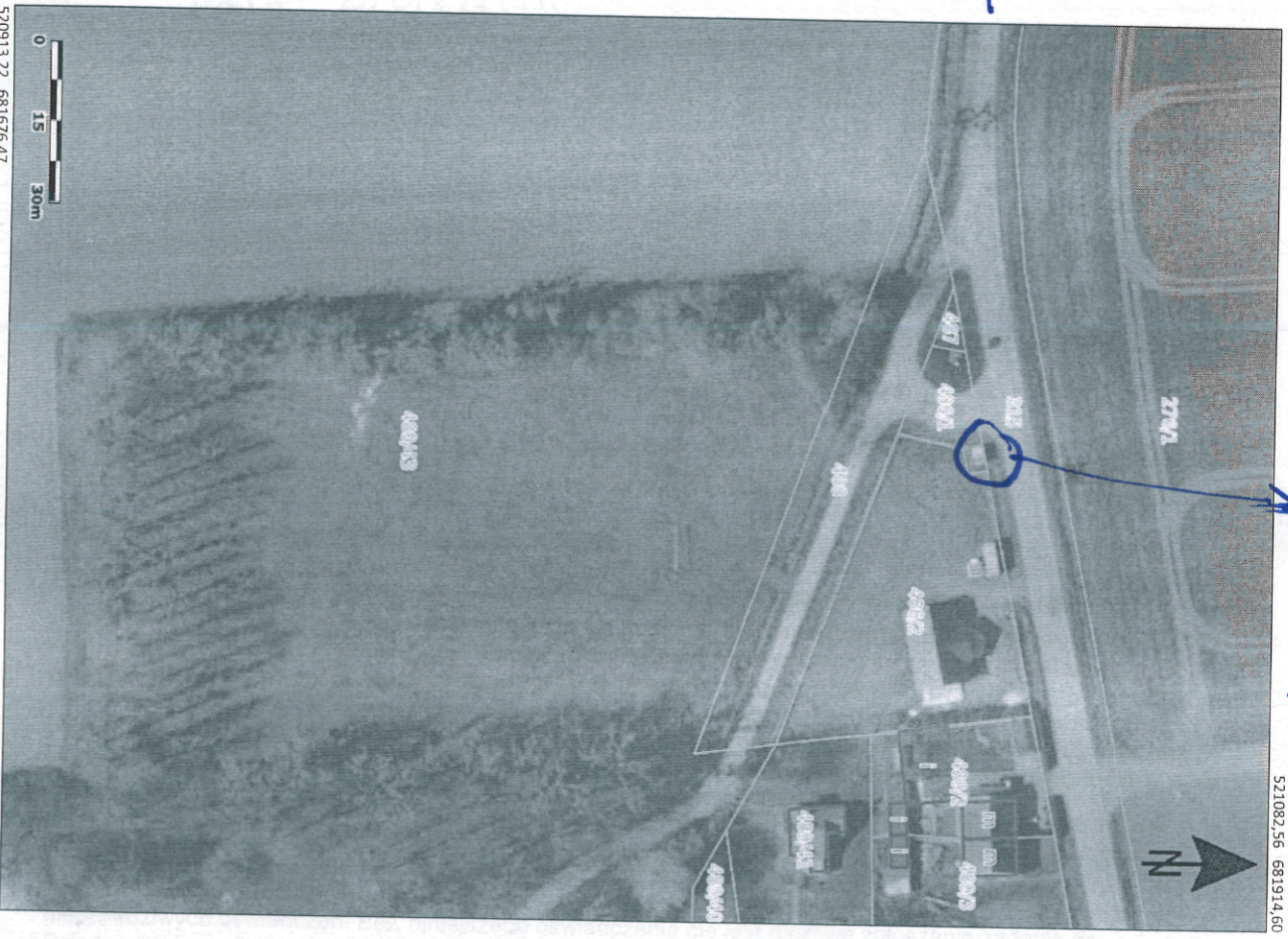
*Przystanek Miasto*

Skala: 1:1000

*Jasne Miasto*



521082,56 681914,60



*⇒ B raport*

*Handwritten notes in a table-like structure, including the word 'B raport' and other illegible text.*

520913,22 681676,47